

KEY FIGURES

Total number of teachers in public education in 2023.



Note: Provisional data for the start of the school year 2023/2024. These figures are likely to change during the school year.

Average expense per pupil in public education in 2020. As a comparison, the OECD-average is 9 954 €.



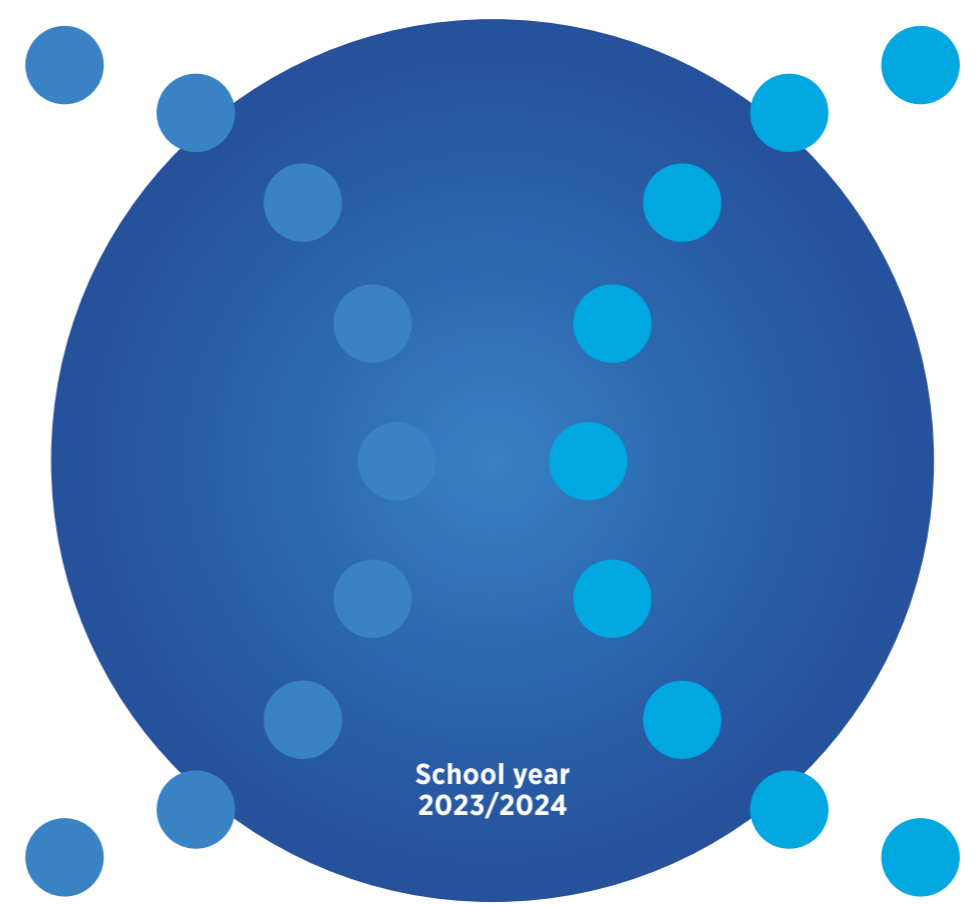
Note: Figures refer to 2020 in order to compare them with the OECD-average. These numbers include expenses from the pre-primary education to the secondary education.



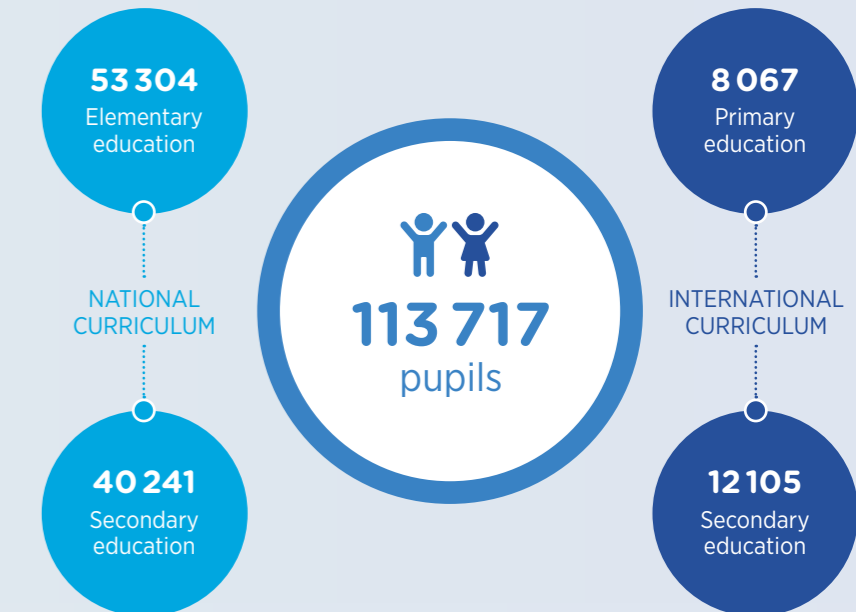
Source: Eurostat (EU-LFS), online data code [edat_lfse_14]. Note: The indicator covers 18 to 24 year-olds with ISCED 2 at most and who are no longer in formal or non-formal education and training.

Education system in Luxembourg

Key figures

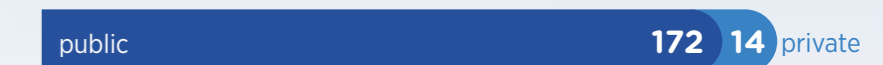


NUMBER OF PUPILS



SCHOOLS

Elementary education



Secondary education



Note: The pupils in the European Schools of Luxembourg, where the places are primarily granted to children of EU staff, are included in private schools.

Statistical publications

Enseignement fondamental
Enseignement secondaire classique
Enseignement secondaire général

Contact

Ministère de l'Éducation nationale,
de l'Enfance et de la Jeunesse
SCRIPT, Service de coordination de la recherche
et de l'innovation pédagogiques et technologiques

eduPôle Clausen
L-2926 Luxembourg
Tel.: (+352) 247 85960
statistiques@men.lu
edustat.lu
dashboard.edustat.lu

Publication date: January 2024

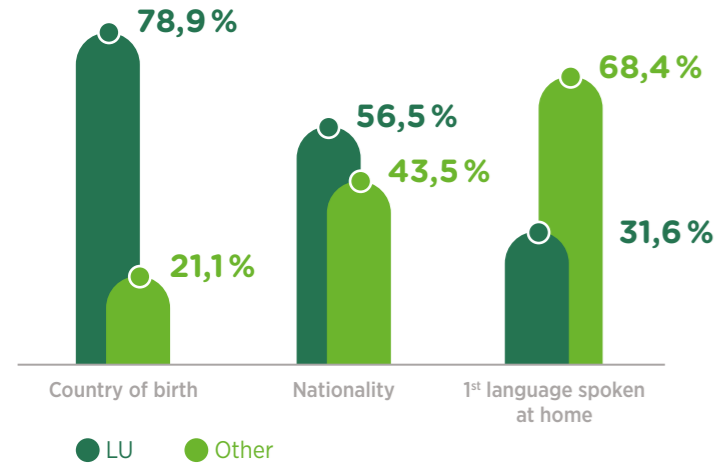


h2a.lu

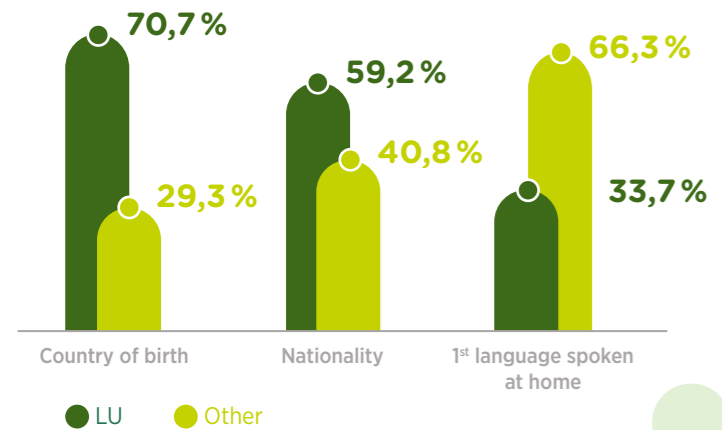


LANGUAGE AND MIGRATION BACKGROUND – NATIONAL AND PUBLIC INTERNATIONAL CURRICULUM

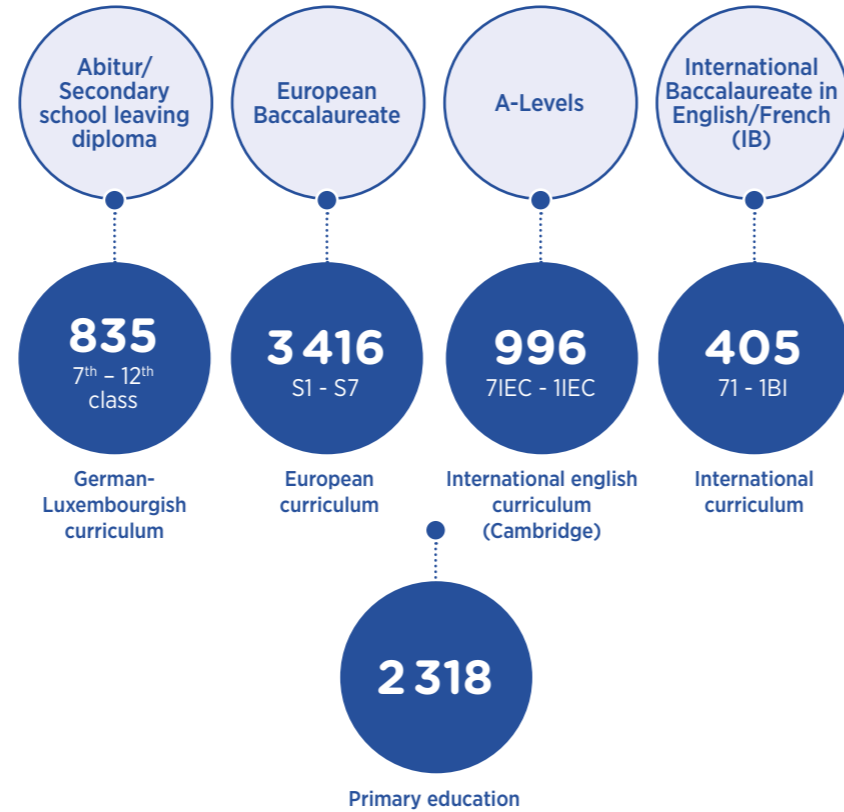
Elementary education



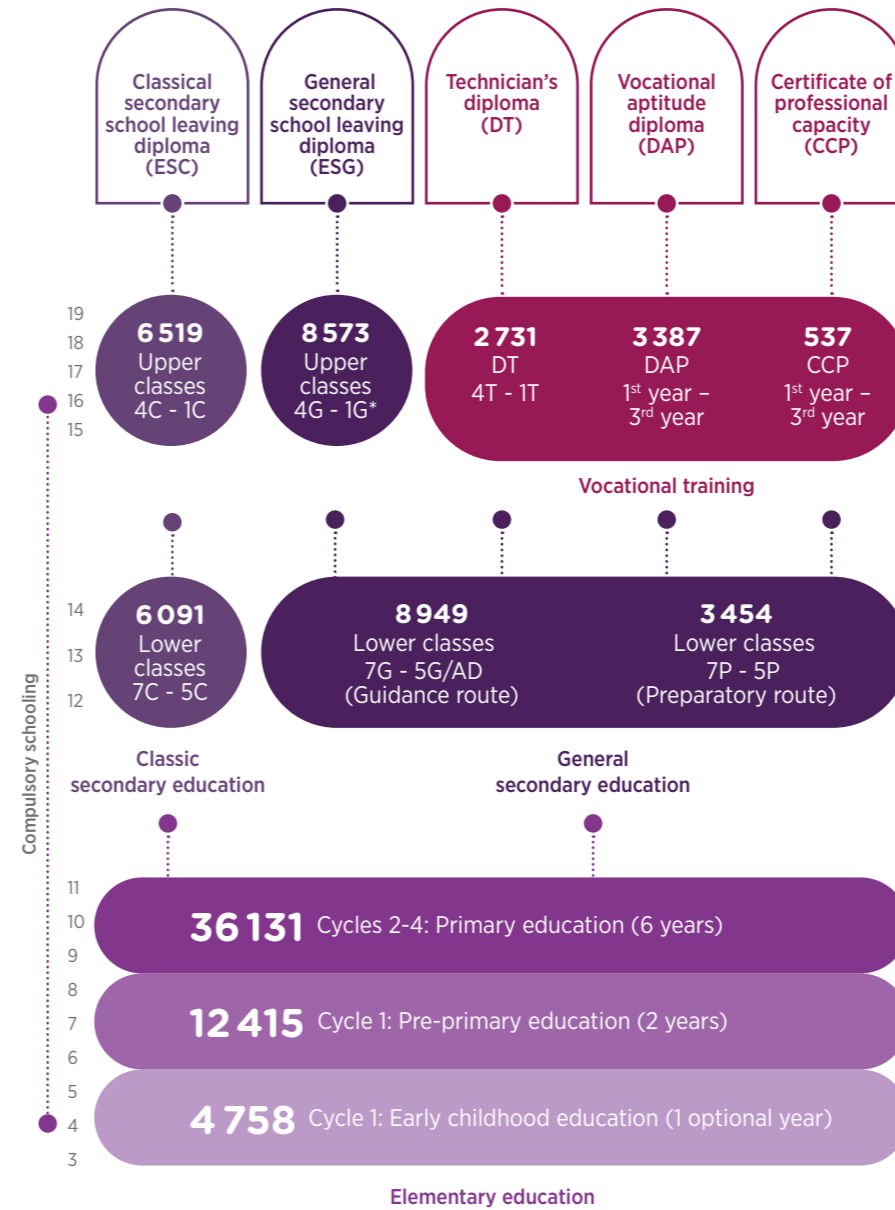
Secondary education



PUPILS IN PUBLIC SCHOOLS – INTERNATIONAL CURRICULUM

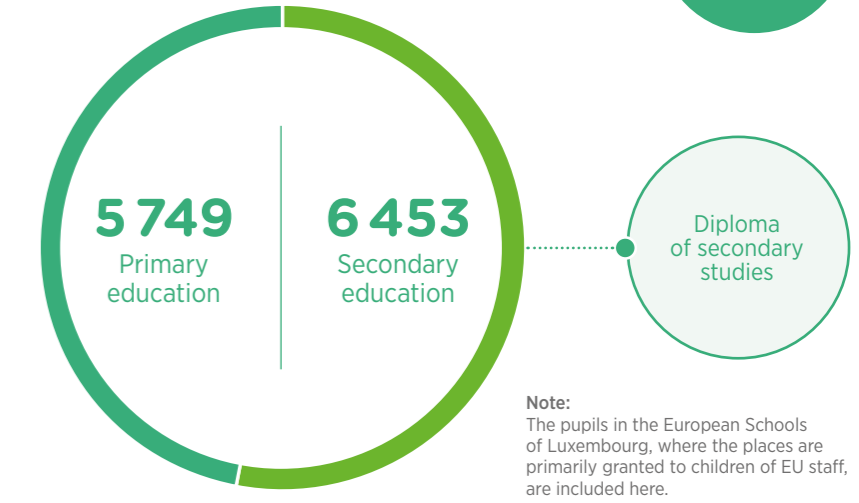


PUPILS IN PUBLIC AND PRIVATE SCHOOLS – NATIONAL CURRICULUM



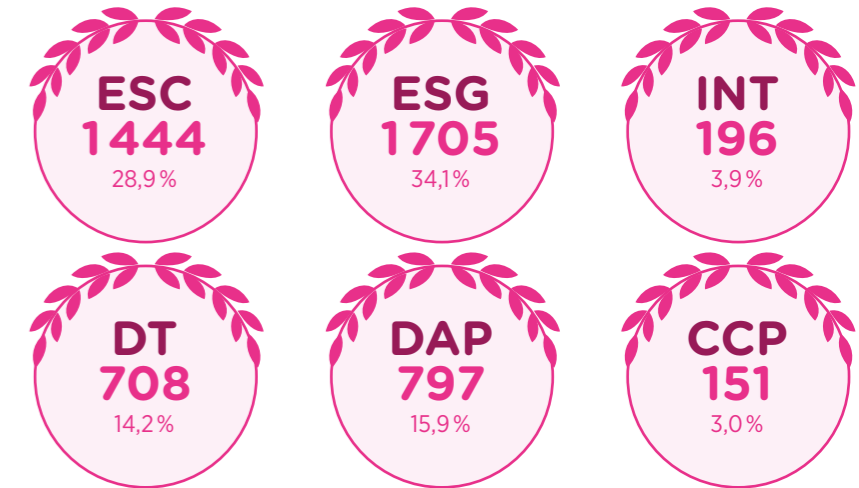
* also includes one final year (ISGED class) in the subject area Educator

PUPILS IN PRIVATE SCHOOLS – INTERNATIONAL CURRICULUM



Note: The pupils in the European Schools of Luxembourg, where the places are primarily granted to children of EU staff, are included here.

DIPLOMAS AND CERTIFICATES ISSUED IN 2022/2023 (public and private schools)



Note: The pupils that have received a diploma of the German-Luxembourgish education are counted in the ESC-diplomas and the pupils of the European, international and international english curriculum in the INT-diplomas.