

KEY FIGURES

Total number of teachers in public education in 2022.



Note: Provisional data for the start of the school year 2022/2023. These figures are likely to change during the school year.

Average expense per pupil in public education in 2019. As a comparison, the OECD-average is 9 576 €.



Note: Figures refer to 2019 in order to compare them with the OECD-average. These numbers include expenses from the pre-primary education to the secondary education.

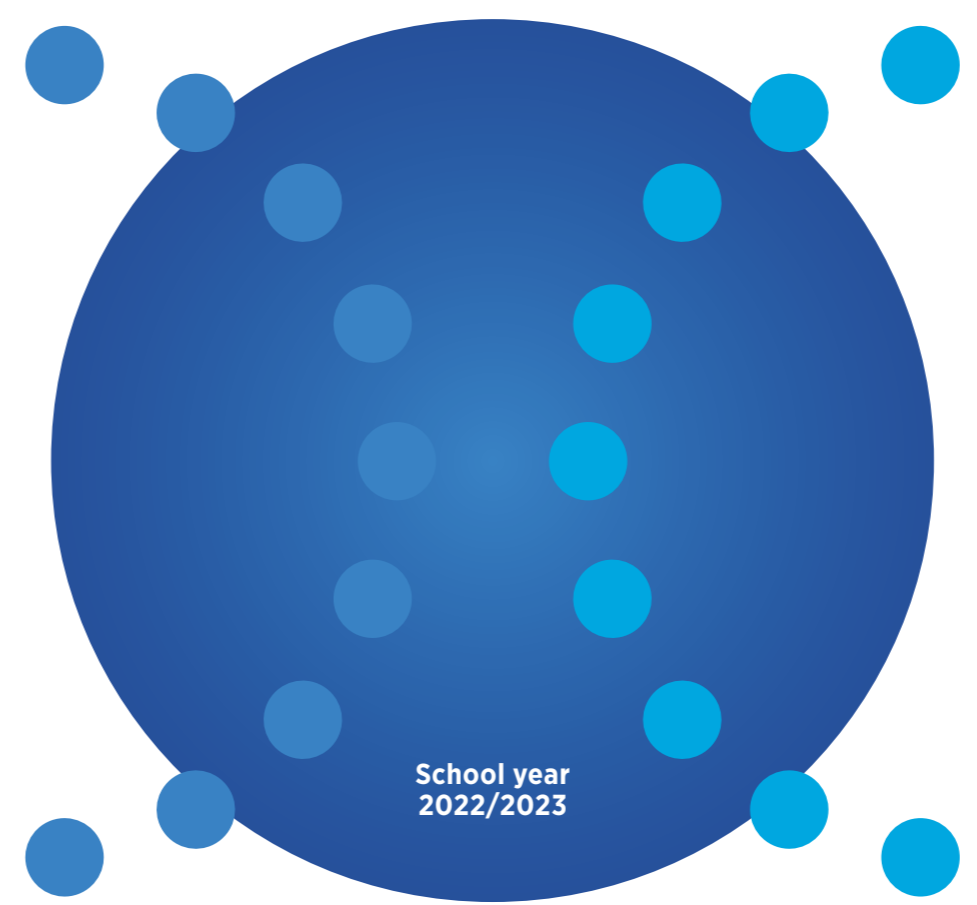
9,3% Rate of pupils leaving public education without an upper secondary school qualification in 2020/2021.

The OECD-average is 9,7 %.

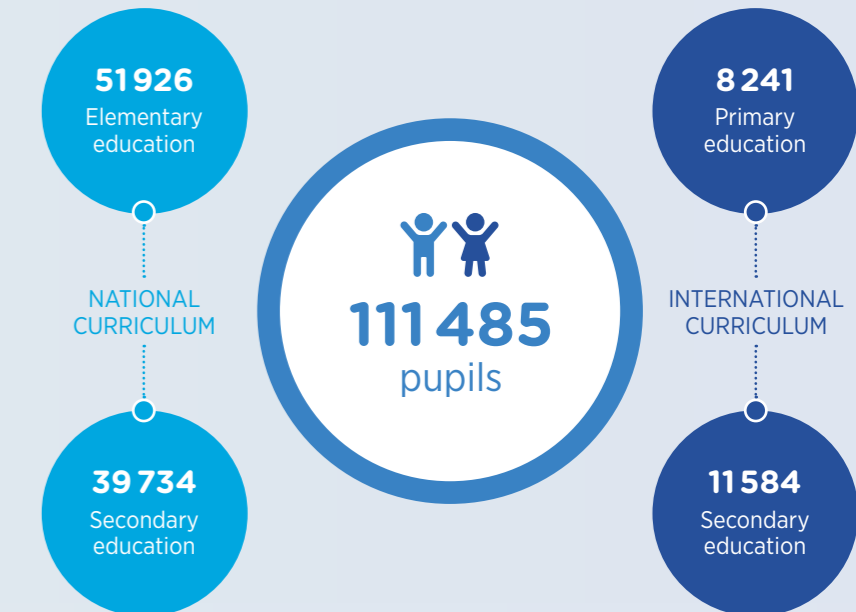
Source: Eurostat (EU-LFS), online data code [edat_lfse_14]. Note: The indicator covers 18 to 24 year-olds with ISCED 2 at most and who are no longer in formal or non-formal education and training.

Education system in Luxembourg

Key figures



NUMBER OF PUPILS



SCHOOLS

Elementary education



Secondary education



Note: The pupils in the European Schools of Luxembourg, where the places are primarily granted to children of EU staff, are included in private schools.

Statistical publications

Enseignement fondamental
Enseignement secondaire classique
Enseignement secondaire général

Contact

Ministère de l'Éducation nationale,
de l'Enfance et de la Jeunesse
SCRIPT, Service de coordination de la recherche
et de l'innovation pédagogiques et technologiques

eduPôle Clausen
L-2926 Luxembourg
Tel.: (+352) 247 85960
statistiques@men.lu
edustat.lu
dashboard.edustat.lu

Publication date: April 2023



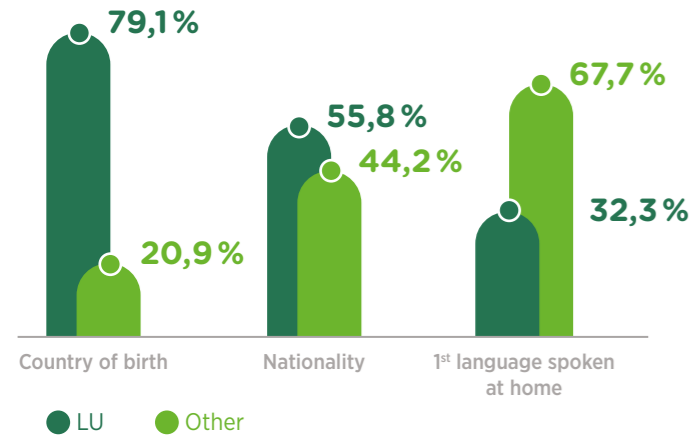
h2a.lu



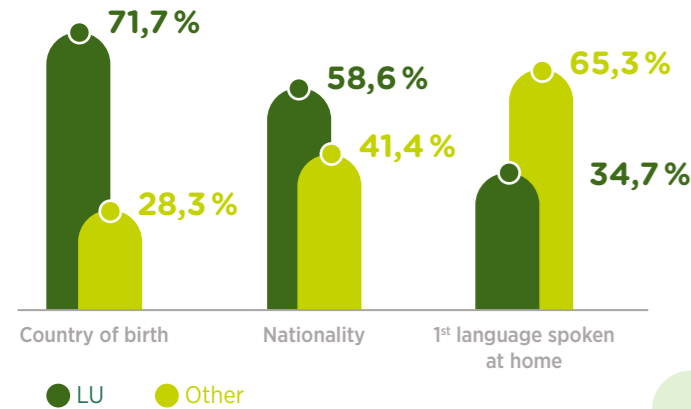
LE GOUVERNEMENT
DU GRAND-DUCHÉ DE LUXEMBOURG
Ministère de l'Éducation nationale,
de l'Enfance et de la Jeunesse

LANGUAGE AND MIGRATION BACKGROUND – NATIONAL AND PUBLIC INTERNATIONAL CURRICULUM

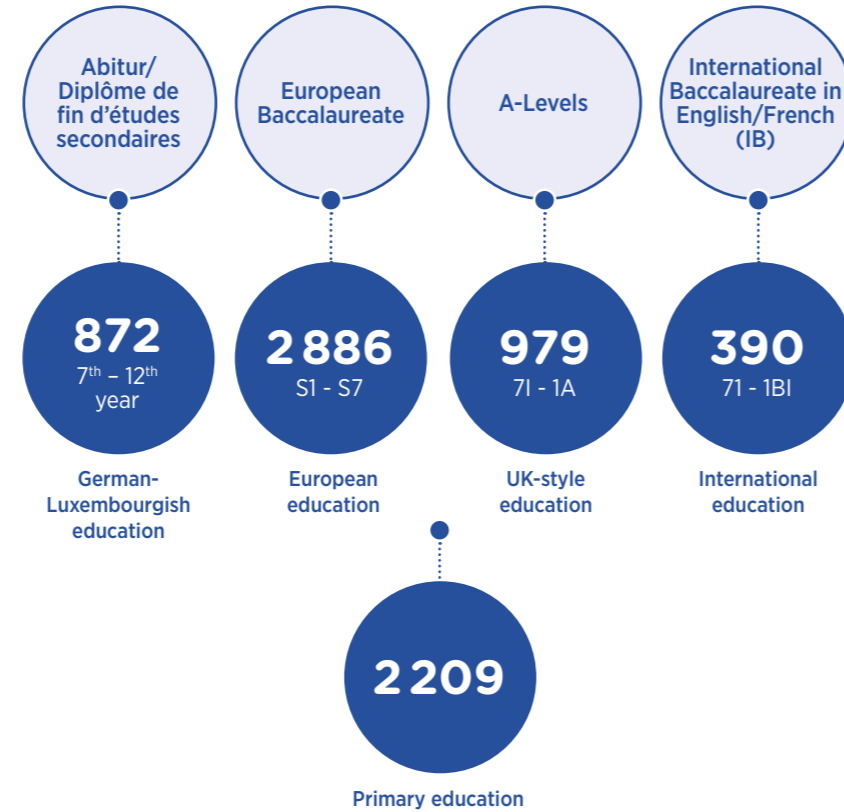
Elementary education



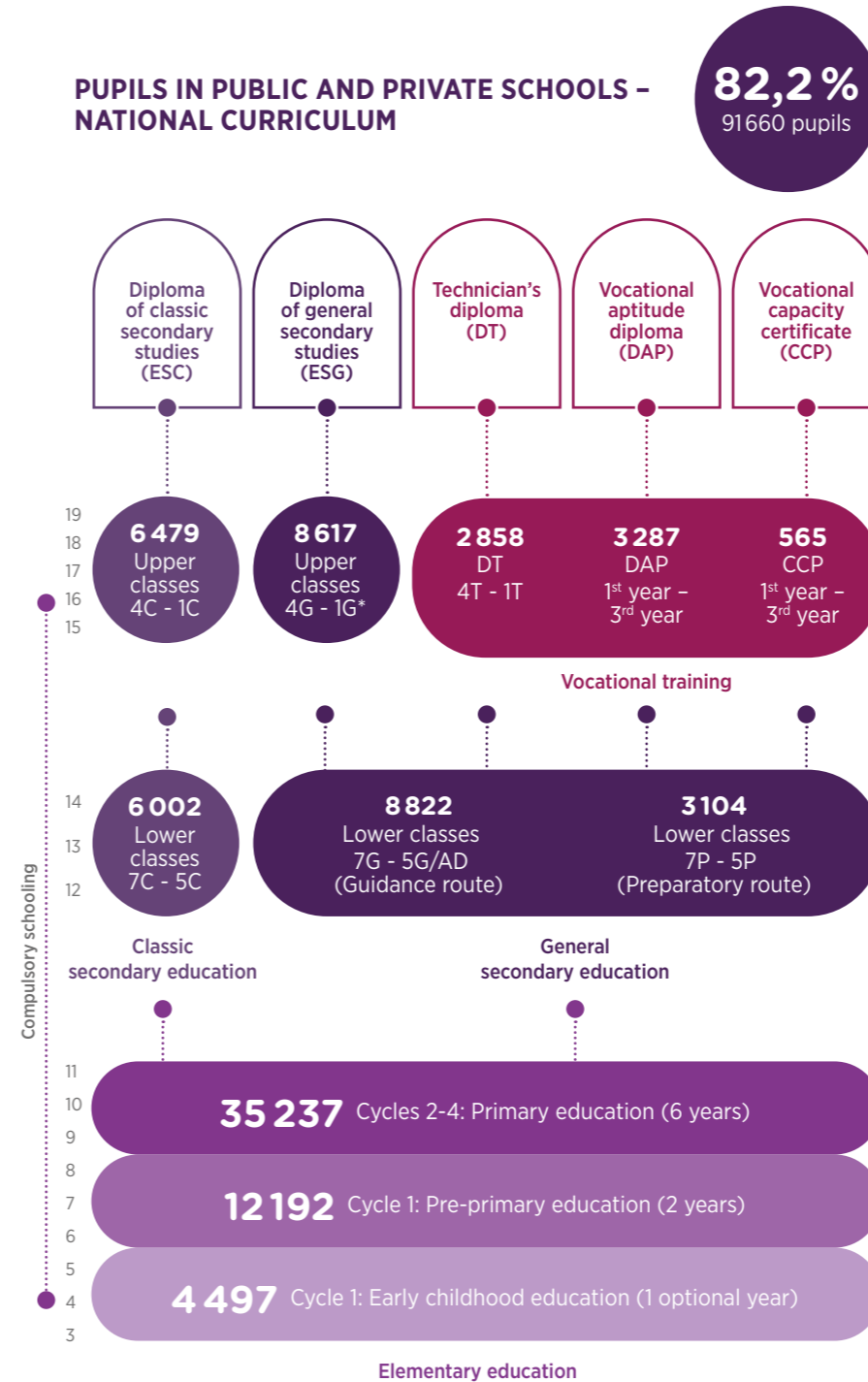
Secondary education



PUPILS IN PUBLIC SCHOOLS – INTERNATIONAL CURRICULUM

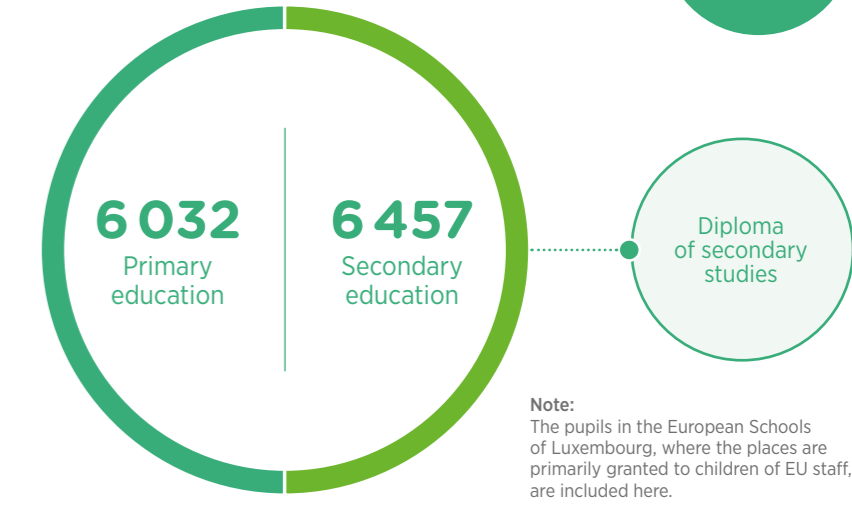


PUPILS IN PUBLIC AND PRIVATE SCHOOLS – NATIONAL CURRICULUM



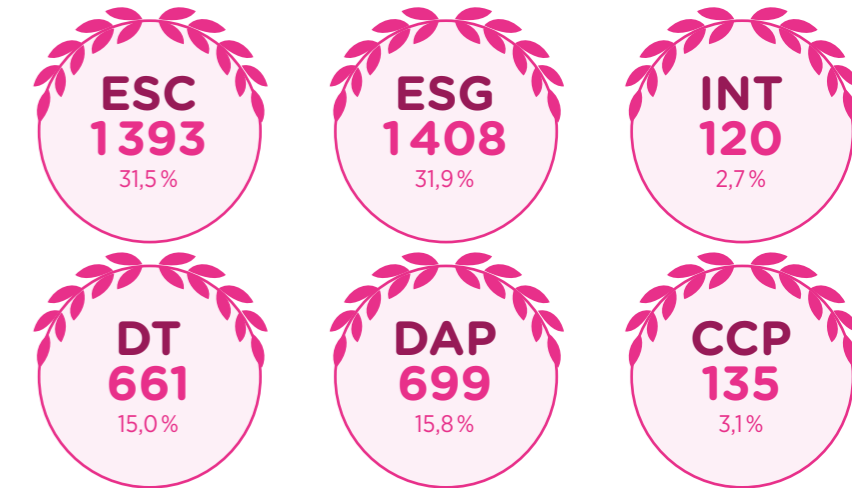
* also includes one final year (ISGED class) in the subject area Educator

PUPILS IN PRIVATE SCHOOLS – INTERNATIONAL CURRICULUM



Note: The pupils in the European Schools of Luxembourg, where the places are primarily granted to children of EU staff, are included here.

DIPLOMAS AND CERTIFICATES ISSUED IN 2021/2022 (public and private schools)



Note: The pupils that have received a diploma of the German-Luxembourgish education are counted in the ESC-diplomas and the pupils of the international and UK-style education in the INT-diplomas. The public European education has only been created in 2016, therefore no diploma has been issued yet.