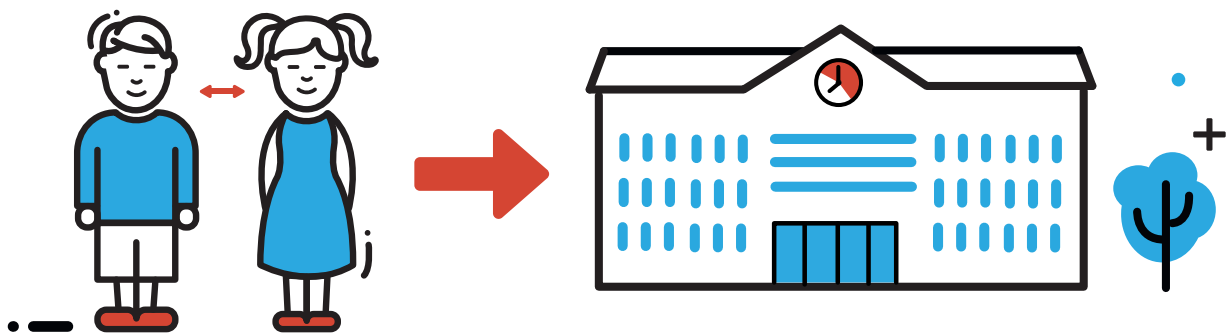




RESUMPTION OF CLASSES IN ELEMENTARY EDUCATION



CORONAVIRUS COVID-19 INFORMATION FOR PARENTS

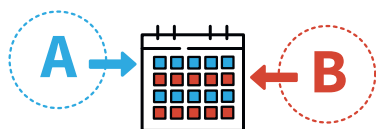
ON 25 MAY 2020 YOUR CHILD RETURNS TO ELEMENTARY SCHOOL.

Childcare facilities and parental assistants are also resuming their activities.

The objective is to allow each child to

- progress in his schooling,
- complete the school year,
- prepare for the next year.

The priority is to protect everyone's health.

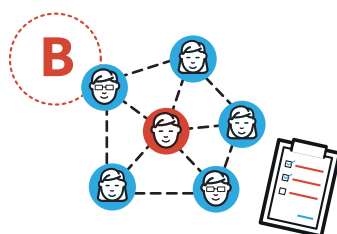


Classes at school

Your child goes to school every other week on an alternating basis.

Each class is divided into group A and group B. When the children in group A are at school, the children in group B are not.

Classes are compulsory and take place every day from 8 am to 1 pm. They focus on what is essential to know for the next school year.

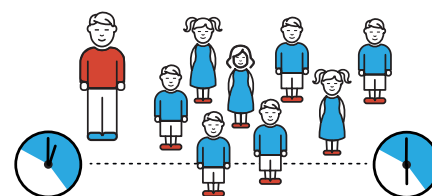


Optional supervised study

When group A is in school, group B reviews the contents learned the week before.

This rehearsal can be done in supervised study at the care facility from 8 am to 1 pm.

It can also be done at home.



Optional afternoon care

Afternoon care is offered to all children. For group A, this will take place at school; for group B, at the care facility.

Until the end of the school year, your child's afternoon care at the care facility and at school is free of charge.

Meals are also free of charge.



8 am to 1 pm	classes at school (compulsory)	supervised study at the care facility (optional and free)	8 am to 1 pm
1 pm to 6 pm	care at school (optional and free)	care at the care facility (optional and free)	1 pm to 6 pm



Holidays maintained

The dates of the Pentecost holiday (30 May - 7 June) and the summer break (16 July - 14 September) do not change.

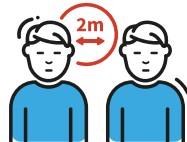
CORONAVIRUS COVID-19 INFORMATION FOR PARENTS

To ensure the best possible protection of children and teaching and educational staff,
9 BARRIER MEASURES ARE IMPOSED ON ALL.



Pupils always remain in the **same group**, A or B.

In the classrooms everyone respects the **interpersonal distance of 2 metres**.



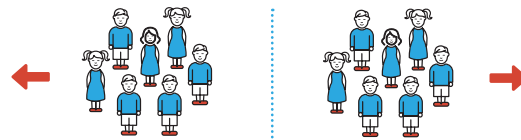
During **school transportation** and in all situations where the **interpersonal distance of 2 metres** cannot be respected, the wearing of a mask, bandana (**buff**) or scarf covering the mouth and nose is compulsory for children attending cycle 2 to 4.

In the classroom, covering the mouth and nose is **optional**.



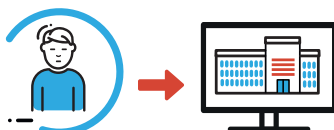
Breaks and recess are **alternated**.

A **circulation plan** reduces contact inside the building.



Regular **hand washing** is mandatory: teachers and educators ensure children comply.

Physical education and swimming classes are **cancelled** until the end of the school year.



Vulnerable students may continue with distance education, upon presentation of a **medical certificate**.



Note:

Specific recommendations for young children are addressed to cycle 1 and childcare staff.

If you have questions, you can also contact your child's teacher.