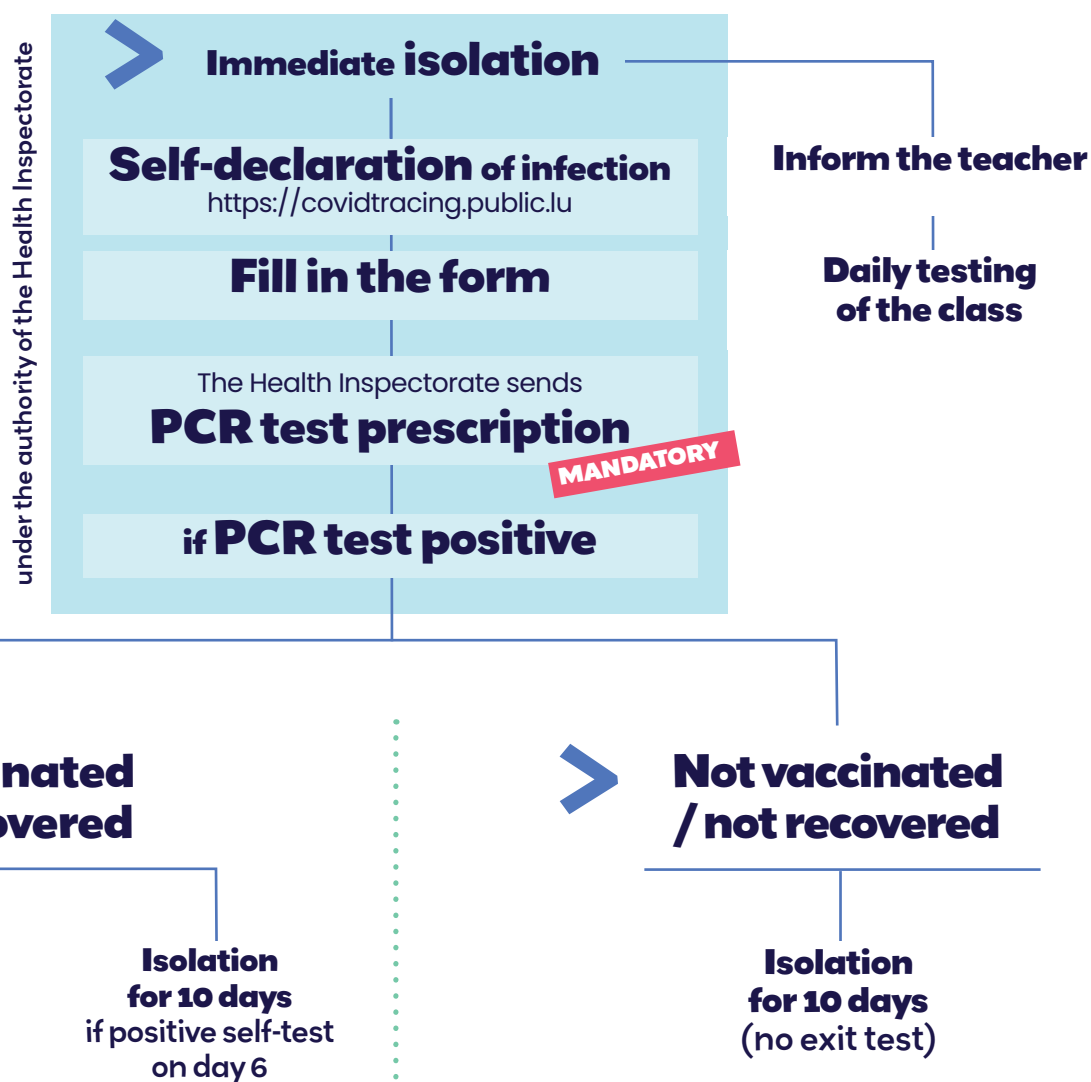


Pupil self-tested positive at home

as of 10 January 2022

What to do



CONSIDERED AS
CERTIFIED SELF-TESTS

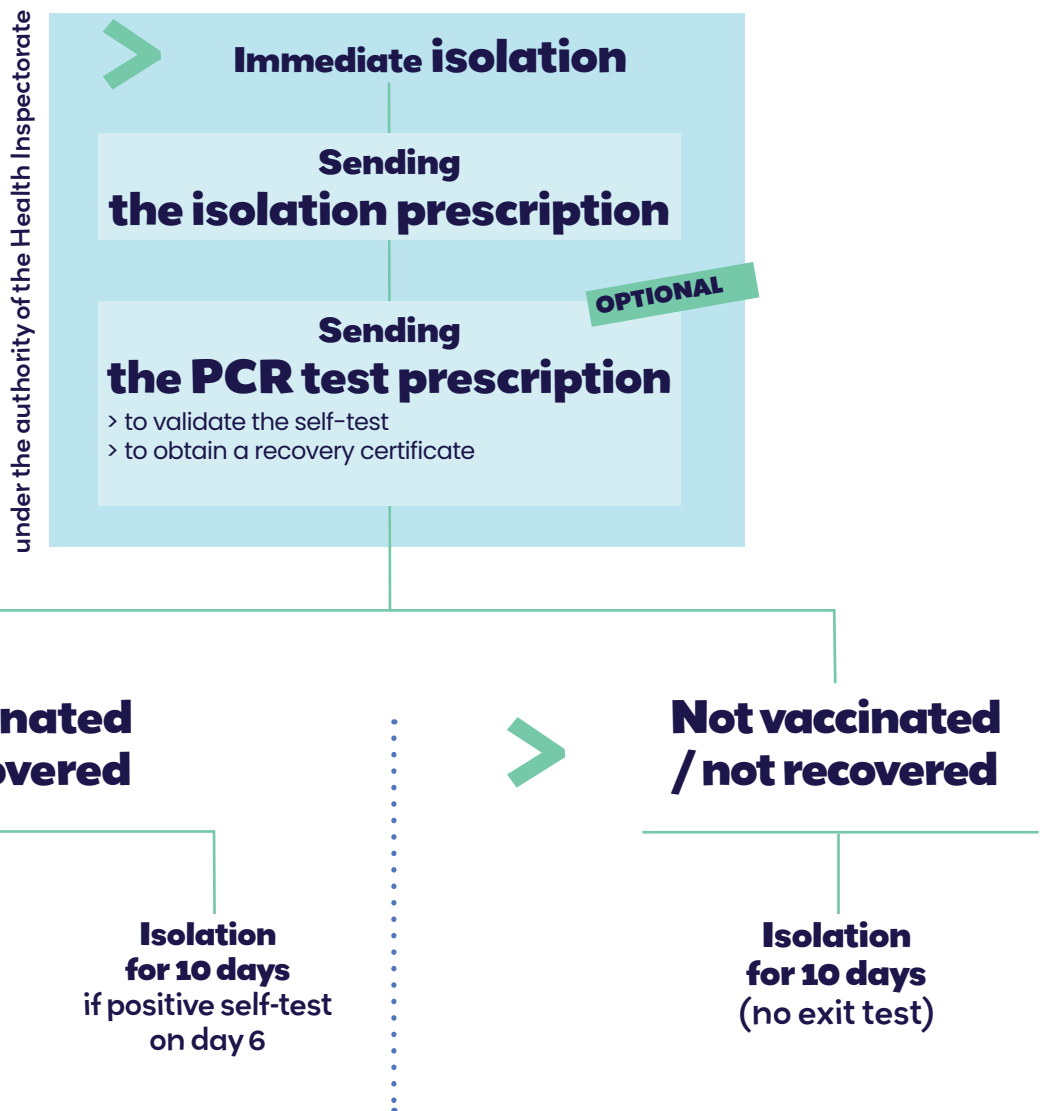
Pupil self-tested positive at school

as of 10 January 2022

What to do
cycle 2-4 &
secondary
school



Enhanced
daily testing
for 1 week



Contact person pupil at school

as of 21 January 2022

**What to do
cycle 1**



Vaccinated / recovered

No quarantine

RECOMMENDATION

**daily self-testing
in the morning at home
during 1 week**
(with declaration on
honour by the parents)



Not vaccinated / not recovered

**daily self-testing
in the morning at home
during 1 week**
(with declaration on
honour by the parents)

Refusal of testing

**1 week
quarantine**

**PCR
or antigen test
certified negative**

**Refusing
test**

Attending school

**Quarantine
for an additional
week**



Contact person pupil at school

as of 10 January 2022

What to do
cycle 2-4 &
secondary
school



Vaccinated / recovered

No quarantine

RECOMMENDATION

Daily self-testing at school
(with parental consent to testing at school)



Not vaccinated / not recovered

Daily self-testing at school
(with parental consent to testing at school)

Refusal of testing at school

1 week quarantine

PCR or antigen test certified negative

Refusing test

Attending school

Quarantine for an additional week



Contact person teacher

as of 10 January 2022

What to do



Due to the increase of COVID-19 cases related to the Omicron variant, the reinforced, i.e. daily, testing scheme ensures the best possible protection.



Reinforced daily testing for 1 week from 1st positive case in class

In the case of a chain of infections (more than 5 cases in one class or several classes concerned), the Steering Committee may decide on a quarantine measure or any other appropriate measure. Teachers are informed of measures by their school's management.

